

Johann Sebastian BACH (1685-1750)

Suite pour luth BWV 995 "de Bruxelles"

Pièces pour la Luth à Monsieur Schouster

Prelude

1

4

8

11

14

18

21

24

tres viste

27

35

42

49

57

64

71

78

85

92

99

106

113

120

127

134

141

148

153

163

169

177

185

193

201

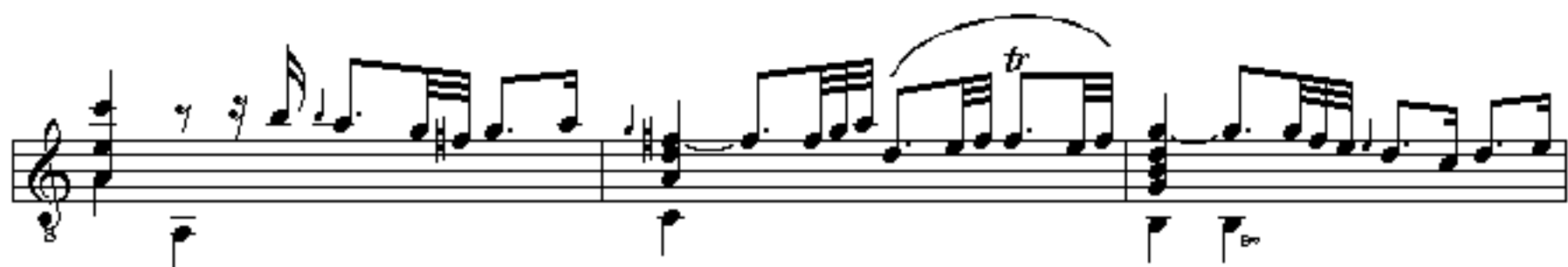
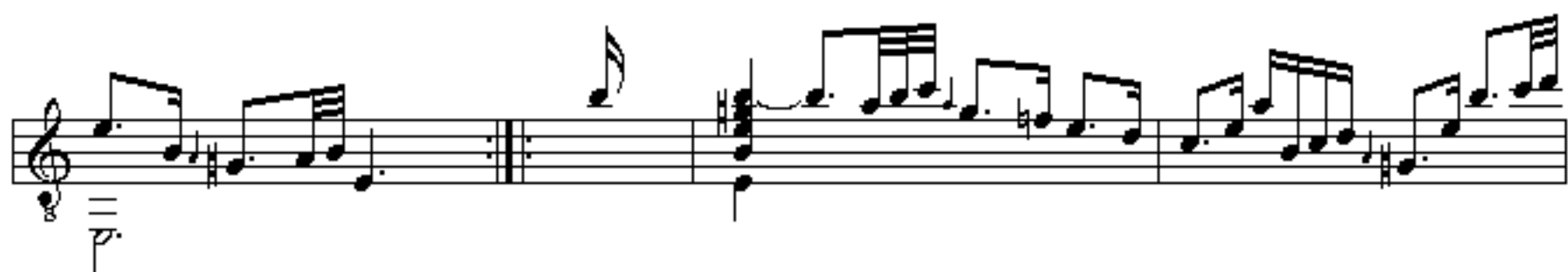
209

217

Johann-Sebastian BACH (1685-1750) - *Suite de Bruxelles* (BWW995)

Allemande

The image displays the musical score for the Allemande from the Suite in B-flat major, BWV 995 by Johann Sebastian Bach. The score is written in treble clef with a common time signature (C). It consists of seven staves of music. The first staff is labeled 'Allemande'. The music features a mix of eighth and sixteenth notes, with some trills marked 'tr'. The bass line is indicated by wavy lines below the staff. The piece concludes with a final chord on the seventh staff.



Johann Sebastian BACH (1685-1750) - *Suite pour luth* (BWV 995)

Courante

4

7

10

12

16

19

22

Sarabande

2

5

8

11

14

17

Johann Sebastian BACH (1685-1750) - *Suite pour luth* (BWV 995)

Gavotte I

4

8

12

16

20

24

28

32

FIN

Gavotte II

3 3

3

5

8

11

14

17

20

Da capo
(Reprise de Gavotte I)

Johann Sebastian BACH (1685-1750) - *Suite pour luth* (BWV 995)

Gigue

5

10

15

20

24

29

34

39

44

49

54

58

63

68